



PRIMAVERA
FOUNDATION 25 YEARS



ANNUAL REPORT

08/09



FROM OUR BOARD PRESIDENT & EXECUTIVE DIRECTOR

**“Do not look back.
And do not dream about the future either.
It will neither give you back the past, nor satisfy your other daydreams.
Your duty, your reward-your destiny-are here and now.”**

Dag Hammarskjold, 1957

Dear friends of Primavera,

In 2009 The Primavera Foundation completed its 27th year of community service, and what a tumultuous year it was!

Hope soared as a popular new President took office, signifying progress against three hundred years of social injustice. The whole country celebrated the “miracle on the Hudson” when a heroic flight crew saved the lives of a planeload of travelers. Such good news was offset by the startling impact of a broken banking system and a poor economy. Who cared for common people as the housing bubble burst and interwoven financial markets teetered on the brink of collapse? Dreams were

broken, jobs disappeared, and faith in revered institutions lost.

Families living paycheck to paycheck lost their homes along with their jobs. Home equity evaporated. Debt and uncertainty reigned. Two wars continued to create traumas, injuries, and hardships that lead to a higher incidence of homelessness among veterans. Meanwhile, on the streets, the homeless population grew.

Among these public challenges and stories of personal desperation Primavera stepped forward. Aided by community and public partnerships, donors, sponsors, volunteers, staff and compassion, Primavera worked

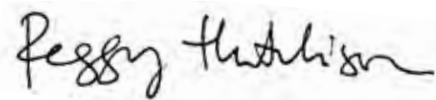
in the “here and now” to provide invaluable services to our community.

Thousands of people were helped in ways both large and small by the programs of Primavera in this challenging year. That could not have been done without your generous support. Thank you.

Love and peace,



Leslie L. Hunter
President of the Board of Directors



Peggy Hutchison
Executive Director

PRIMAVERA EXISTS
BECAUSE:

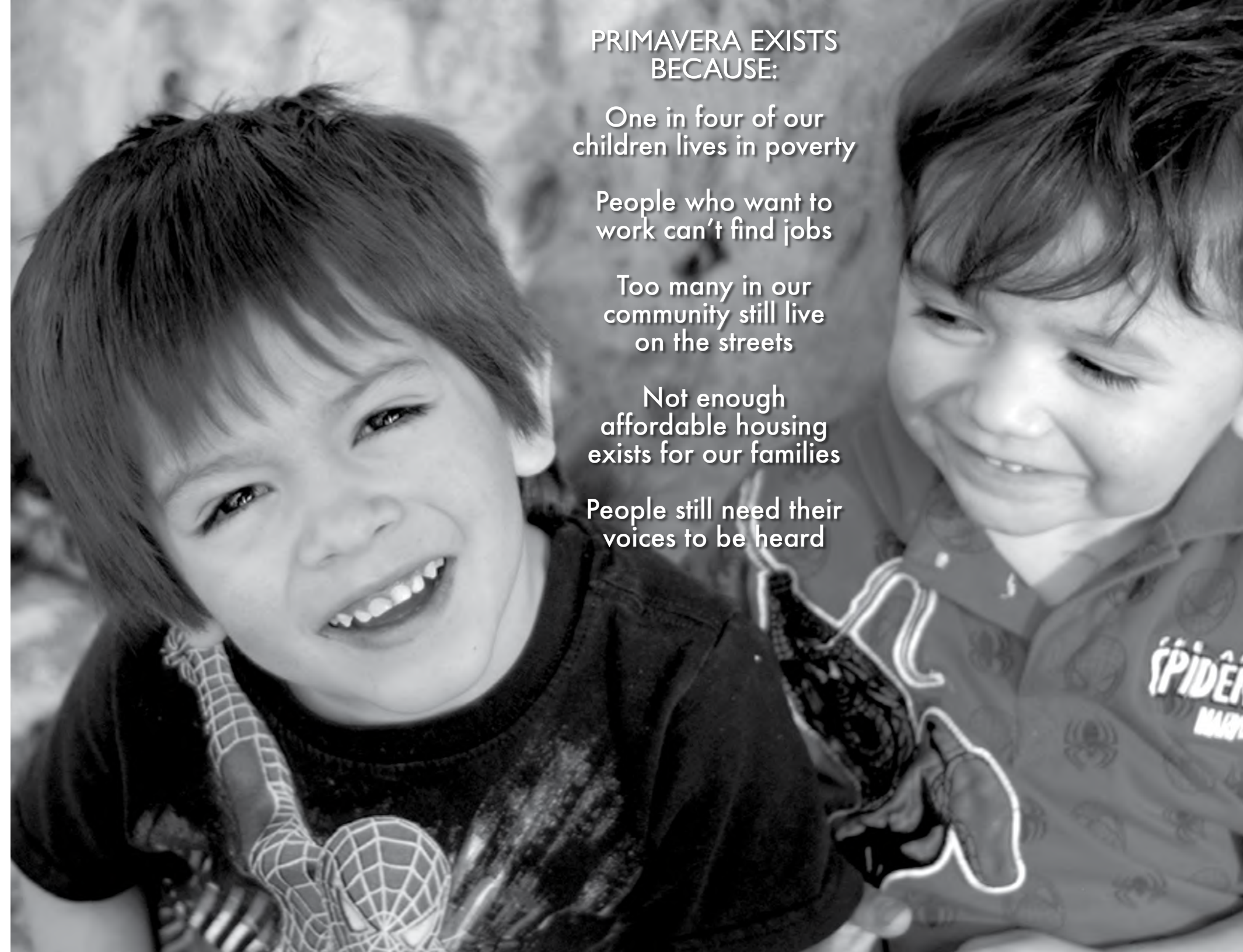
One in four of our
children lives in poverty

People who want to
work can't find jobs

Too many in our
community still live
on the streets

Not enough
affordable housing
exists for our families

People still need their
voices to be heard





SURVIVAL

EMERGENCY SERVICES

Primavera's Emergency Services include daytime drop-in hospitality centers, mail and message service, food boxes and bus passes, eviction prevention, emergency motels for families, mobile homeless outreach, mobile crisis response, a 107 bed men's shelter and a 17 unit family shelter. Primavera provided 3,860 food boxes and 7,528 bus passes to persons with medical or job interview appointments. 60,150 safe nights of respite shelter to 975 individuals/families; 256 families received rental assistance to prevent eviction; 2,059 households received case management through emergency services.

RELIEF AND REFERRAL DROP-IN CENTER

Our street-level center provides basic survival resources for homeless and low-income men, women, and children, including personal hygiene products, restrooms, respite from the weather and Pima County's only free message and mail service. The program also offers information and referrals through case management and a supportive, safe environment.

MEN'S EMERGENCY SHELTER

This 107-bed facility is the largest men's shelter in Pima County, and provides meals, support services, and case management for up to five consecutive nights. If working or in case management, guests may stay up to 90 days free of charge. Case managers offer assistance and referrals to guests dealing with health concerns including substance abuse problems.

PREVENTION AND INTERVENTION

Short term case management for homeless and near homeless individuals and families providing emergency motel vouchers for families, eviction prevention funds, rental, mortgage and move-in assistance, referrals to emergency and transitional shelters and assistance with basic needs, such as food, clothing, diapers and bus passes.

MOBILE OUTREACH

The outreach case manager visits desert encampments, river beds and other areas to inform homeless individuals and families about services and resources for their immediate and/or long range needs. Bringing food, blankets and clothing helps establish rapport, gain trust and develop relationships with those living outside.

CASA PALOMA DROP-IN CENTER

Unaccompanied, homeless women receive immediate survival assistance including showers, food, hygiene supplies, clothing and a safe haven. Services available include case management and referrals, free laundry facilities, phone access, bus passes and supportive volunteers, staff and peers.

GREYHOUND HOMELESS FAMILY SHELTER

This 17 unit complex is the only shelter in Tucson that keeps families of any make-up housed together. A case manager works with guests to link them with benefits they may be entitled to, helps with budgeting and a savings plan, and advocates on their behalf with DES, CPS and school districts.

WORKFORCE DEVELOPMENT

PRIMAVERA WORKS

Primavera Works, an employment and workforce development center for homeless/near homeless men and women, served over 700 people last year. This transitional day labor program helps people establish a stable work/tax history, gain work skills and access resources necessary for permanent employment and independent living. 45% of those who utilized this service left with permanent employment.

PRISONER REENTRY PARTNERSHIP (PREP)

Prisoner Re-entry Partnership (PREP) – Primavera's four-year multimillion dollar U.S. Department of Labor demonstration grant is a community partnership providing employment services and mentoring for ex-prisoners released into Pima County. To date, PREP has enrolled 649 participants with the following results: employment rate after first quarter: 71%; employment retention rate after one year: 76%; recidivism rate: 13%, compared to the national recidivism rate of 44%.



STABILITY

AFFORDABLE HOUSING

TRANSITIONAL & PERMANENT RENTAL HOUSING

Primavera operates ten housing programs with 180 housing units. 549 persons (individuals and families) were served in our rental housing programs last fiscal year. On average, 65% of transitional housing residents who have been in the program more than 30 days move into permanent, safe housing after exiting the program.

CATALINA HOUSE Twenty units for homeless men in transition who are employed full-time or are enrolled in the Jackson Employment Center. Case management is required and residents learn to save money for permanent housing, find sustainable full-time employment and/or obtain job training.

FIVE POINTS TRANSITIONAL HOUSING Twenty-eight single units for men and women working at least 25 hours per week, often newly released from prison or a drug/alcohol rehabilitation facility. Emphasis is placed on community living, support groups, life skills, and educational opportunities.

BRIDGES Scattered site apartments across Tucson for homeless families with full-time working parents. Savings and debt reduction, job training and permanent housing are the program goals.

CASA Scattered site apartments for homeless, single parents with children. Participants receive subsidies while working with case managers on job training, employment, financial stability and securing permanent housing.

CASA II Scattered site apartments for homeless two parent families with children. Participants work with case managers to improve their financial stability and identify permanent housing options. Participants must income-qualify, work full-time, and be able to get a lease in their own name.

CASA PALOMA WOMEN'S RESIDENCE Nine units for unaccompanied, homeless women, including those who are older, not immediately employable or others who may fall through the cracks. Women may enter the program unemployed but have one month to secure employment income or begin a training/educational program.

WINSTEL TERRACE APARTMENTS Twenty-eight units for men, women, or couples who are working or receiving entitlements such as disability or veteran benefits but still have barriers to independence, need to increase income or are waiting for appropriate permanent affordable housing.

WOMEN IN TRANSITION (WIT) Twelve units for single employed women who work with a case manager on financial skills, budgeting, full-time employment, counseling, and securing permanent housing.

ALAMO APARTMENTS Fourteen single apartments for clean and sober men living on limited incomes. Most residents are veterans or unable to work full-time due to physical conditions.

LAS CASITAS APARTMENTS Twelve two bedroom, two bath apartments for low-income families with children. Financial and Homebuyer Education classes are offered to interested families.

SECURITY

HOMEOWNERSHIP

During the year, 220 individuals graduated from the financial education workshops and 269 graduated from the homebuyer education workshops. 559 individuals attended the foreclosure prevention workshops; 549 families received foreclosure prevention counseling services; 128 families were able to obtain a loan modification and bring their mortgage current; 85 families were able to save their homes from foreclosure. In addition, Primavera assisted 75 families in purchasing their first home.

NEIGHBORHOOD REVITALIZATION

Primavera completed owner-occupied rehabilitation of 12 homes, purchased two empty lots for the development of new Energy Star Manufactured Homes, and replaced one distressed home and developed one new infill home.

COMMUNITY ENGAGEMENT

Primavera hosted 25 forums and one leadership training event reaching an overall total of 6,325 people; 30 ex-prisoners were successful in having their civil rights restored through Primavera's partnership with the University of Arizona Law School legal clinic. Primavera partnered with several other coalitions to successfully defeat Proposition 200, a state-wide ballot initiative that would have allowed payday lending to operate in the state into perpetuity.

PRIMAVERA GREEN ACTIVITIES

Primavera partnered with Watershed Management Group, Barrio Anita Neighborhood Association and 44 community volunteers to invest in water sustainability by building a grey water system, and a resulting community garden at Casa Paloma.

SUSTAINABILITY



COMMUNITY PARTNERSHIPS

Primavera programs and the organizations, businesses and government agencies we partner with.

Emergency Services & Transitional Housing

Arizona Department of Corrections
Armory Park Neighborhood Association
Carondelet Health Network Casa Maria
Community Food Bank
Compass Behavioral Health Care
COPE Community Services
Dequesh Mobile Clinic
La Frontera
Gospel Rescue Mission
Jackson Employment
Open Inn
Our Family Services
Pima County Community Development
Pima County Public Fiduciary
El Rio Health Center
SAMHC Behavioral Health Services
St. Elizabeth of Hungary Clinic
St. Vincent de Paul
Salvation Army
Southern Arizona AIDS Foundation
Tucson Fire Department
Tucson Housing and Community Development Department
Tucson Planning Council for the Homeless
Tucson Police Department
VA Substance Abuse Treatment Program

Workforce Development

Arizona Department of Corrections
Arizona Department of Corrections, Parole and Prevention Services
City of Tucson
DK Advocates
Federal Adult Probation

Jackson Employment
Old Pueblo Community Services
Pima County Community Services
Pima County One Stop
South Tucson Police Department
Southwest Center for Economic Integrity
Tucson Planning Council for the Homeless
Vocational Rehabilitation
YWCA

HomeOwnership: Financial Education, HomeOwnership Education, Mortgage Foreclosure Mitigation Counseling

Assets for Arizona Institute
Bank of America
Federal Home Loan Bank
Financial Education Collaboration of Southern Arizona
Harris Bank
HSBC
Hughes Federal Credit Union
Literacy for Life Coalition
Mutual of Omaha Bank
National Bank of Arizona
NeighborWorks® America
Northern Trust
Pascua Yaqui Tribe
Pima County – Don't Borrow Trouble Coalition
Southern Arizona Women's Foundation
Tucson Federal Credit Union
Wells Fargo

Neighborhood Revitalization

Casa Maria
City of South Tucson
Corporation for Enterprise Development (CFED)
John Valenzuela Youth Center
Mennonite Voluntary Service
NeighborWorks® America

Pima County Community Development and Neighborhood Conservation Department
South Tucson Prevention Coalition
U.S. Department of Housing and Urban Development
University of Arizona Urban Planning Students

Community Engagement

29th St. Weed & Seed Coalition
American Friends Service Committee – Arizona
Arizona Coalition to End Homelessness
Arizona Housing Alliance
Arizona Multihousing Association
Arizona Restoration of Rights Coalition
Arizona Weed & Seed Reentry Initiative – LECC
Kino Weed & Seed Coalition
National Coalition for the Homeless
National NeighborWorks® Association
Social Justice Education Project
Southern Arizona Legal Aid
Southwest Fair Housing Council
Southwest Institute for Research on Women (SIROW)
Tucson Police Department
University of Arizona Law School
Westside Weed & Seed Coalition

COMMUNITY PARTNERSHIPS

We could not help the numbers of people we do each year without the significant support of so many businesses, individuals and civic groups. Following is a sampling of some of our major contributors. We thank them and all of our supporters.

COX COMMUNICATIONS

In the 2008-2009 fiscal year, Cox Communications funded Primavera programs and services directly with \$45,000 in underwriting sponsorships, but that isn't all they've done. Cox also raised an additional \$24,000 on Primavera's behalf in our first ever Cooks! Corporate Buyout dinner, literally bringing new supporters to the Primavera table, and braving scorching kitchen temperatures and unwieldy wine 'keys' to serve a record-setting 170 Cooks! guests. Several different staff teams bought/prepared/delivered and served meals to hundreds of our participants and cleaned out and organized our storage areas for donated goods. Cox Media made a 30 minute documentary about our work and it aired statewide on their COX-7 channel, giving Primavera exposure to new markets. They also produced and aired PSAs for our Cooks! events and Primavera Works jobs program.

In the past year community-wide, Cox Communications Southern Arizona distributed more than \$1 million in resources; supported more than 145 local events; distributed more than \$70,000 in employee contributions to local nonprofits; volunteered more than 3,500 employee hours; and aired more than 5,000 hours of Public Service Announcements.

The work Cox has done for and with us, and many others, has been monumental, extraordinarily important and greatly appreciated. We thank them for bringing their resources to bear and touching, changing and saving lives in southern Arizona.

NEIGHBORWORKS® AMERICA



Primavera Foundation is a chartered member of NeighborWorks® America (NWA), a nationwide network of community development organizations actively engaged in revitalization strategies that strengthen communities and expand the supply of affordable housing. The standards for maintaining NWA membership are high. Primavera undergoes periodic, rigorous audits and reviews to ensure taxpayer money is being invested in ways that produce results for citizens. NeighborWorks® America provides financial support, technical assistance and training, enabling Primavera to build and strengthen our organizational capacity in ways that serve our community. **NeighborWorks® America's Organizational Health Tracking System Committee has rated Primavera Foundation an Exemplary Organization because Primavera has exceeded performance standards in Resource Management, Organization Management, and Production/Program Services.**

CHRISTOPHER JOHNSON MCCANDLESS MEMORIAL FUND

Christopher Johnson McCandless left this world in August of 1992, in an abandoned bus located on the remote Stampede Trail near Denali, Alaska. This bus, which Chris called home for a short period of time, marked the tragic end to an otherwise adventurous, joyous and very human personal two-year journey. Chris' amazing tale became memorialized by Jon Krakauer's 2004 book Into the Wild, and later by the 2007 Sean Penn film based on the book.

At the time of his passing, his parents, Billie and Walt McCandless, created a charitable trust called the Christopher Johnson McCandless Memorial Fund whose purpose was to distribute assets to charities and individuals in Christopher's memory. Book and film royalties continue to fund the foundation. Walt and Billie are part-time Tucsonans and have funded Primavera since 2008, granting almost \$20,000 to support those most vulnerable and in-need in our community, especially our children.

"Primavera's Executive Director, Peggy Hutchison, made a presentation to the Voyager Chapel congregation a few years ago and she said something that caught our attention immediately; 'We don't give handouts here at Primavera - we focus on giving hand-ups,'" Billie noted. "That matched the goal of Chris' Purpose - it is our intention to help people (children) who are in a crisis situation to 'grow' out of it - we try to be very careful about enabling, as that does more harm than good. We are very proud to be involved with an organization like Primavera who does such wonderful work for so many."

ST. THOMAS MORE CATHOLIC NEWMAN CENTER

The St. Thomas More Catholic Newman Center on the University of Arizona campus is a shining example of what taking action and creating change on a local level are all about. This faith community holds social justice in high regard and they have made incredible strides with The Primavera Foundation this past year.

Every single Sunday, The Newman Center collects non-perishable food items for Primavera clients, dropping off their bountiful collection on a monthly basis. For over 10 years they have been hosting the Halloween and Valentine's holiday parties at our Greyhound Emergency Family Shelter. In addition, they provide two regular, monthly breakfast teams at our Men's Emergency Shelter, they regularly donate leftover food items from church dinners, contribute financially, and have dedicated their "Giving Tree" to Primavera for the last two Christmas seasons, in which they collect hundreds of presents for our clients.

The parishioners who attend Newman are socially engaged and often attend our forums and advocacy events, as well as similar events organized by Casa Maria, and other non-profits that strive to create change in our community. There is simply no way that Primavera could exist without the support of community partners like the Newman Center.

VOLUNTEERS

Many Primavera programs rely heavily on the time, energy and compassion of a volunteer force of hundreds of people from all walks of life. They are truly the backbone of our agency and a good portion of its heart. Primavera could not exist without them and we are forever inspired by their commitment.

59 Weekly program volunteers
8,828 Total hours annually

625 Monthly meal team volunteers
30,000 Total hours annually

510 Other additional volunteers
5292 Total hours annually

1,195 Total volunteers
44,155 Total hours

Value of Volunteer Hours in Dollars \$893,430
Volunteer hours equal 21 full time paid employees

*Using Independent Sector's Arizona \$20.25 per hour figure
Volunteer hours are estimated in some cases

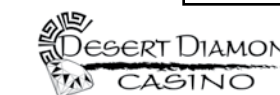


The Primavera Foundation partnered again with select Tucson Originals restaurants to create a series of eleven wine-paired, fine dining fundraising dinners earning more than \$135,000 during its seventh summer season of Primavera Cooks! Over 700 diners, 55 community apprentice chefs, 10 restaurateurs, 25 committee members, 3 media partners and 10 underwriters made this our most successful season ever.

EVENT SPONSORS



This year Cox Communications and the Primavera Foundation partnered on the first ever corporate buy-out of a Cooks! Dinner. The Cox night at Pastiche was a great success with 170 diners and raised more than \$20,000 for Primavera.



KEN & LINDA ROBIN

PAM GRISSOM

Anonymous CBIZ CITRON PAINT
Talerico Family Primavera Cooks! Committee

MEDIA PARTNERS



PARTICIPATING RESTAURANTS

JANOS FEAST ACACIA DOVE MOUNTAIN GRILL
PASTICHE CUP CAFE J-BAR KINGFISHER
MAYNARD'S JONATHANS

25 YEARS

Primavera celebrated its twenty five year history with an Anniversary Gala and fundraiser on October 8, 2008. The event featured a dinner and entertainment by Grammy Winner R.C. Nakai. Sponsors were Cox Communications, The Jim Click Automotive Team, Arizona Foothills Tucson & Community Partnership of Southern Arizona

SIGNIFICANT IN-KIND DONATIONS

July 1, 2008 thru June 30, 2009

Adobe Corral	92.9 The Mountain
Alan's Shoe House	Mountain High Knitwear
Assistance League of Tucson	Nippon Motors
Baker + Hesseldenz	Kumba Made
Bed, Bath & Beyond	The Ten Primavera
Marji & Bill Buehler	Cooks! Restaurants
Mari Broenen	Raim & Associates
Mary Clare & Andrew Gildon	Red Wing Shoes
CPSA Employees	Lenore Skilton
DakotaPro.Biz	Southern Arizona
Dev-Con International	Community Bank
Cathy Esposito	St. Thomas More
Joseph Heller	Newman Center
Home Depot	Target Stores
Donna Knight	Bogutz & Gordon
KOLD News13	Tucson Airport Authority
The Benedictine Convent	Tucson Quilting Guild
Lewis & Roca	Over 90 Volunteer
Madden Preprint & Tucson HOME	Meal Teams
	Dr. Edmund J Weber
	John & Jill Weiss

VOLUNTARY EMPLOYEE FURLOUGH

The following Primavera employees donated a total of 775 hours of unpaid time off to help save on payroll costs.

Ron Austin	Jill Conway	Linda Kot
Debbie Bengé	Rele Dean	Kathy Richer
Karen Caldwell	Ruth Kontos	Rick Sumner

GOVERNMENT CONTRACT SUPPORT

Arizona Dept. of Housing	\$11,800
University of Arizona	\$44,402
Federal Emergency Management Agency	\$99,226
US Dept. of Housing and Urban Development	\$214,454
Arizona Dept. of Economic Security	\$358,394
NeighborWorks® America	\$442,288
Pima County	\$609,776
US Dept. of Labor	\$718,653
City of Tucson	\$905,422

PARTICIPANT SUCCESS STORY

– Amy Baumier

Every story has a beginning. Where mine started isn't important, what is, is the moment I realized that I lost everything to meth: I lost my house, my career, my cars, my marriage, myself, and worst of all, my kids. I was sentenced to the Dept. of Corrections for 2 ½ years. **I was scared, hopeless, and defeated. That is when I actually started living my life. I had nothing, yet I had a chance to regain everything.**

After parole, I would get and stay clean. I decided to stay in Tucson, and was introduced to the Primavera Foundation. That was the best decision I've ever made. I joined the PREP program, and then I went to a few of the properties that Primavera offers and found the WIT house. WIT has been a perfect fit for me! **I have found in the program that there is not one person there that does not sincerely want to see me succeed.**

I have been clean 25 months. I have a really good job. I have actively participated in weekly case management, successfully completed parole, re-established a relationship with my kids and plan to move them up here at the end of this school year. I am engaged to a wonderful man and am working towards getting a house. Primavera can also help with that with their homebuyers program that I plan to participate in.

I have control and make my own choices. It is not always easy, but **if I can survive an addiction to meth, I can survive anything this life throws at me.** I hope to be an active part in helping those who have the same problem as I have. **If I can help one person overcome their addiction, then none of this has been done in vain.**

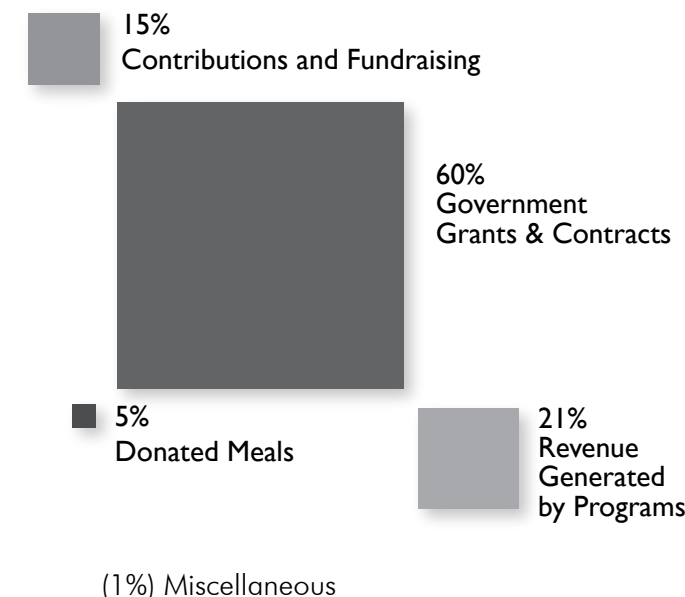


CONSOLIDATED STATEMENT OF REVENUE & EXPENSE

FROM JULY 1, 2008 TO JUNE 30, 2009

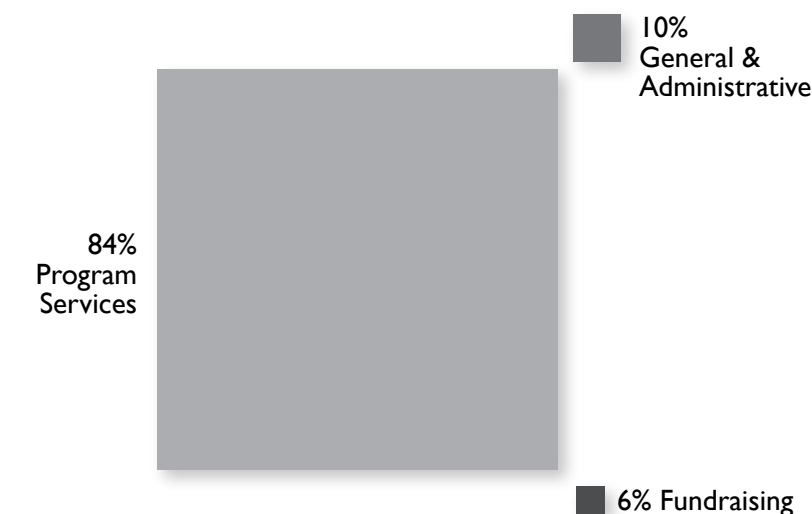
REVENUE

GOVERNMENT GRANTS & CONTRACTS	\$3,623,961
REVENUE GENERATED BY PROGRAMS (Primavera Works Revenues, Rents, Home Sales, and Loan Closings, etc.)	\$1,255,674
CONTRIBUTIONS & FUNDRAISING (Events, Planned Gifts, Corporate, Private Foundation and Individual Donations)	\$925,487
DONATED MEALS (All other donated items and all donated labor NOT included)	\$324,280
MISCELLANEOUS (Interest Income, Unrealized Gains)	(\$98,315)
TOTAL REVENUES	\$6,031,097



EXPENSES

PROGRAM SERVICES	\$5,138,997
GENERAL & ADMINISTRATIVE	\$589,422
FUNDRAISING	\$405,419
TOTAL EXPENSES	\$6,133,838



\$250-\$999

Donations between July 1, 2008 and June 30, 2009

Anonymous (3)
Carole & Arnold Adler
Metin Akkaya
Gary & Olivia Albert
Kathy Altman and Ivy Schwartz
Sharman & Daniel Altman
Kathryn D Anderson
Elizabeth Apking
Applied Rite Doors & Docks
Boyd & Kristin Ashdown
Nancy C Atherton
John & Robin Baade
Mary Baenziger
Yorke & Ann Bannard
Barbara & Morton
Bowman Foundation
Robert & Joey Barbee
Robert & Jeannette Barnes
Lawrence & Jacquelyn Barr
Harrison & Catherine Barrett
Barbara & Howard Barron
David & Pamela Basila
Kent & Robin Batty
Martha R Bautzmann
Gary J & Patricia G Becker
Paul D Bennett
Beowulf Alley Theater
Moe & Frances Beren
Robert Beren
Jean-Paul Bierny and
Christine M Tanz
Robert & Krista Binnie
Thomas & Carla Blackburn
Sharon & William Blair
Denice Blake and
John L Blackwell
David & Patricia Blatt
Paul Bliklen
Lori & Michael W Block
Spencer & Kerstin Block
Warren G Bodow and
Ellen F Bodow
Joyce M Bolinger
Sidney E Bond
Janice and Gary Bonwell
Rebecca A Bowman
Thomas & Janice Bradel
Riemke M Brakema
Patsy Brannon and
George Buchanan
Jean Braucher and
David R Wohl
Marcy & John Brell
Richard H Brennan
Dawn K Brown
Garry Bryant and
Margaret McGonagill
Ruby & Bill Buchsbaum
Terri Burchett
Richard M Butler and
Georganne E Doty
Stacy & James Butler
Robert B Cairns and
Mary K Murphy
Alicia Calahorra and
David W Shapiro
Roger & Ellen Caldwell
Cambridge Investment
Research, Inc.
Care Coordinators
Beth Ann Carey
Leslie A Carlson
Patrick & Paula Carrico
Roger Carrillo
Donald & Helen Carson
Casas Adobes

Congregational Church
Hugh & Frances Caspe
Robert & Joan Kaye Cauthorn
Amy Charles
Yvette M Citzen
Starr & Bradley Cochran
Gail & Alan Cohn
Debbie & Tom Collazo
Jerrilyn Collins
Julie Connors
Continental Steel
Jill I Conway
Bronwyn P Cook
Robin J Coon and
Carol A Groetken
Jean S Cooper
Donna Collow
Jennifer Cowen
Margaret & Charles Cray
Kent & Arlene Crawford
John Philip Cropper and
Linda Gale Drew
Deirdre S Crutchfield
Brian Cunningham
John & Hope Cunningham
John T Cuprak
Kathleen & Edward Curley, Jr
Cynthia Dagnal-Myron
Deborah Dale and
Jeffrey Grubic
Richard Dale, MD
James & Stacy Himes
D'Antonio
Dash Family Foundation
Norma F Davenport and
Carter L Marshall
Barry M Davis
Norman & Shirley Davis
Timothy & Margaret Davis
Larry & Lorna Dawson
Klara K Day
Dennis & Patricia De Concini
Evo David De Concini
Rhonda & Tim Dean
Nancy & Anthony DeFoe
Lawrence & Florence DeLucia
Kerry & Richard Demers
Dr A Richard Diebold Jr
Cammie Derrin
Keri B Dixon
Kacy & Damon Don
Suzanne L Dovi
Blake & Nancy Down
Sherry J Downer, Esq.
Pamela & Timothy Downey
Marjorie Dudley
Jacques & Micheline Dumont
Catherine N Dunlap
William Dunn
Martha Durkin
Patricia Eaglen
Eastside Assembly of God
Eugene & Gretchen Edminster
Suzanne Edwards
David Elliott
Mary Carlisle Ellis
Kathryn Elssesser
Jean L Elsner
Emergency Medicine
Associates
Frances and Roy Emrick
Heather L Enos and
Christopher Shinohara
Marvin F Erickson
Bette & Gerard Ervin
Richard & Merrill Evans

Betty Feinberg
Norma & Stanley Feldman
Ruth Feldman
Julie Ferdon and Donald Smith
Susan Ferrell and
L Anthony Fines
Jan Findley
Tay Fitzgerald
Peggy J Forsythe
George & Carol Franklin
Alan R Friedman
Sharon A Friedman
Edward & Bonnie Frisch
Terry & Marc Frost
Christian Frueh and
Sandra Marie Way
Anna Summers Fulton
James & Carol Furman
Andrea & Howard M
Gabbert, II
The Gadsden Company
Racheli Gai and John Palmer
Kori Garcia
Betty & James Geehan
Greg K Geile
William K Geller
Gerald & Marion Gendell
Jaswinder & Harinder Ghuman
Nancy & John Gilabert
Jennifer L Gillaspie
Frances & John Gillette
Dr Edwin E Gilliam
Harriet & Charles E Gillman
Catherine M Gioannetti and
Catherine K Aspinwall
Robert & Brooke J Glennon
John & Elaine J Goetz
Marc & Muriel Goldfeder
Nasrine & Paul J Goldstein
Robert & Lorna Golseth
Good Shepherd UCC
Gerald R Goode
Rebecca & Chris Gordon
Anita Goriely
Thomas & Mary Gould
Donald & Julia Graf
Michael & Patty Gramling
Linda K Grant and Peter Medine
Loring & Susan Green
Green Valley
Community Church
Myron & Jane Grimes
Jennifer H Gross and
Jerry W Lefevre
Anne-Marie & Philip Hall
Dr Jennifer D Hall and
David W Mount
Joan Hall
Robert & Lillian Hall
Mary L Harbour
Norma & Walter Harmer
Patricia Harvey
Susan L Hausser
Kendall A Head
Kenney Hegland
George & Charlotte Hein
Donovan S Hemway
Mary Anne Hesselden and D
Scott Baker
Thomas & Sandra Hicks
Dolores D Hillenbrand
Emily & George B Hilliard
Robert J Hirsch
Junius & Elizabeth Hoffman
Cynthia D Holland
William & Lupita Holliday

APART FROM
THE BALLOT BOX,
PHILANTHROPY
PRESENTS THE ONE
OPPORTUNITY THE
INDIVIDUAL HAS
TO EXPRESS HIS
MEANINGFUL
CHOICE OVER
THE DIRECTION
IN WHICH OUR
SOCIETY WILL
PROGRESS.

--GEORGE G. KIRSTEIN

Barbara L Holtzman
Hope United Methodist Church
Ke Chiang & Shigeko Hsieh
HSL Properties
Bryan Huckaby
Holly Hutchison and David Simm
Ned & Mary Hutchison
IBM Employee Services Center
Margaret H Ingraham
Intuit Foundation
David & Charlotte James
Frederic & Gayle Jandrey
Bradley & Jacqueline Johns
Dina & Allan Johnson
Ian Johnson
Susan T Johnson
Edmund & Kathleen Kahn
Leslie Kahn and Susan L Heinrich
Marvin W Kahn
Brian Kanter and Julia
Waterfall-Kanter
Wanda L Kay
Richard & Marguerite Kelnhofer
Terri Kessler
Edith R Ketcham
Thabet & Victoria N Khalidi
David & Patricia King
Kleine Family Foundation Fund
Evelyn & Dale Kleinhans
Cynthia L Klingberg
Heather E M Knee
Christine Kocsis
John & Beverly Kofron
Thomas & Linda Kot
Robert & Karen Kreiling
Joaquin Kremer
John Krikawa
Paula A Kulahjian
Joan E Laguna
Marian W Lake
David & Sandee Landsburg
Edward & Sabine Lane
Rose M Lane
Jon Langione

Mervin & Leanne Lantz
Dan R Leach
Nancy Grace Lease
LeCroy & Milligan Assoc Inc
Tina T Lee
Bruce Lehmann
Keith & Adrienne Lehrer
Lawrence H Levine
Lewis Framing Studio
William & Rose Marie Levya
William Lincoln and
Linda J Layton
Lawrence J Lippert
Living Water Ministries Inc.
William G Lockwood
Long Realty Cares
Foundation
Marilyn J Ludwig
Kristina Lunde
Francis A Lux
Barbro S Lynton
Clifford and Elizabeth Lytle
Andrew H MacLeod and
Felicia Lowery
Beth Malasky and
John T Chesley
Frank & Janet Marcus
Kathleen & Stephen
Martinek
Maria Elena Martinez
Mark L Mason
David & Nancy Massanari
Toni M Massaro
Walter B Matlock
Sylvia L Matteson
Jeffrey Matthews
Gerald E Matyk
Gary M May and
Elaine M Gallardo
Barbara Newman McCabe
Stanley & Elizabeth
McConner
Mary Beth McDonough and
Meghan Brown

\$250-\$999

Donations between July 1, 2008 and June 30, 2009

Robert & Gerri McIlheran
Carol A McMillan
John & Katrin McNeerney
Kenneth H Meeker
Clay & Laurie Mering
Merrill Lynch Private
Client Services
Nancy Tokar Miller
Richard Miller and Mardith
Schuetz-Miller
Roberta Miller
Steve & Cynthia Miller
John & Joy Mills
Jeffrey & Barbara Minker
John & Mimi Moffatt
Lawrence M Moher
William R Montfort and
Martha L Narro
Hugh & Pauline Moore
Rosemary L Morgan
Daniel Morrison
James F Morrow
Kevin T Morrow
Denise & Kenneth Morton
Al & Jeannie Mueller
Nancy W Munroe
Hal E Myers
Native American Flute Music
Daniel & Julie S Nentl
Ronald J Newman
Wendell & Rosemary
Niemann

Northwest Center for
Geriatric Medicine
Margaret & Charles Nugent
Mary C O'Connell
Richard & Elise Oestreich
Deborah A Olinger
Laura Ott and Doug Levy
John & Karen Otto
Our Saviour's
Lutheran Church
Fred Pace
Loreli L Panico
Carol & Michael Parker
Robert & Janet Paultette
Frederick & Christine
Petersen
Hilary B Peterson
James & Jane Peterson
Charles M Pettis
Piccarreta & Davis, P.C.
Dr John M Pifer
Pima County ECAP -
United Way
Steven & Ruth Polyea
Jeanne & William Porter
Charles (Corky) M Poster
and Mary J Goethals
Potential Community
Systems Change
Marc Potish
Mrs Louis Pozez
Hugh & Gayle Prather
Pamela J Price
Linda D Primavera
RA Sushi Bar & Restaurant
Marl Ramsey
Charles A Ranney
Scott & Myra Ransick
John & Rosemary Rawson
Frank & Natalie Recely
Dr Kathryn L Reed
John & Ellen Reesy
Dr Thad L Regulinski
Donald & Barbara Reich

James & Serene Rein
Jeffrey Rein
Peter Reinthal
Boyer Rickel
Michael & Arlene Rieber
Jim and Linda Roberts
William J & Priscilla
G Robinson
Robert & Sandra Rohen
Donald Bacon Rollings
Ric Romero and Jody
Wilkinson
Tiana & Jeff Ronstadt
Thomas & Virginia Roof
William Rose
Carla Zingarelli Rosenlicht
Anne & Lowell Rothschild
Jonathan Rothschild and
Karen M Spiegel
Susan E Ruff
Joaquin & Bernadette Ruiz
Bernadette E Russell
Barrie Ryan
Thad Ryan and Edy Vuke
Barbara & Edward R Saffran
Amos & Catherine Sales
Santa Cruz Lutheran Church
Stephen & Rachel Schaefer
Joann Schafer
Timothy Schaffner and Anne
Maley-Schaffner
Christine & Dwight
Schannep
S Leonard Scheff
Edella C Schlager
Elizabeth Schloss
Dirck T Schou
Eileen D Scott
Sherman Scurry and
Christopher P O'Neill
Milford & Ann Seby
Neil H Sechan and Matthew
H Messner
Donald & Hope Seeley
Louise L Serpa
Jacquelyn Shearer
Janice Silvyn
Jeffrey & Kerri Silvyn
Bruce Simon
Bruce & Pamela Simon
Robert H Skamfer
Ellen & Terje Skotheim
Lester & Ethel Slezak
Brad W Smith
Luella & Sidney Smith
Ulysses S Smith
David Snow
Harold & Kathleen Snyder
Rosemary Solarez and Billie
G Cummings
Mary & Jeffery P Somers
Lowell & Lois Sorenson
Southern Arizona Com-
munity Bank
Chris & Kimberly Sparling
Manette H Speas
St Augustine's Cathedral
St Mark's United
Methodist Church
Jan M Staedicke
Robert & Wanda Stauffacher
Howard & Marilyn Steele
Jack & Irene Steindler
George Stevens
Sally & Ralph Stevens-Taylor

Corinne Stinson
Joel Strabala
Barbara E Straub
Camilla Strausfeld
Jane Strohm
Victoria M Stromee
Hassan & Beth Sultan
Donna & Robert Swaim
David & Donna Tang
Ruth M Tankersley
Joan Denise Taub
Paul & Marilyn Taylor
Susan & Harold Teague
William & Kimberley Terry
Stella Teter
Roy Thatcher
Kjarsten & Adolph Thiele
Sheryl A Thomasson
Jerry L Thornton
Phyllis & James Tingstad
Debra & Vernon L Tomanek
Elias & Jane Toubassi
Julie & Ward Townsend
Shirley L Tribolet
Trinity Presbyterian Church
Trinity Presbyterian Women
TroyerCorp/Nippon Motor
Service
Patrick & Lisa Turner
U of A Bookstore
UA Health Sciences Center
Karin Uhlrich and
Shannon Cain
United Way of
Southeastern Pennsylvania
Jeff Valasco
Nick Van Kleeck
Dale & Janette
Van Laningham
Linda R Van Pelt
Anne S Vance
Kathryn L Vega
Rodrigo G Villar
Visions in Education Inc and
Lawrence Freidman
Connie & Phillip Volk
Terry & Pamela Vondrak
Voyager Summer Chapel
Nancy B Wall
Nanette Warner
Greer T Warren
Nickolas M Wasser and
Mary V Price
Patricia H Waterfall
Richard and Karla Weeks
Christopher S Wendel
Carol & Neil West
James Weston
Mr & Mrs Charles H Whitehill
Jarrell K Wicker
Susan K Willis
David S Wilson
Mary-Page Wilson
Sidney & Mary Wilson
Lisa & Brandon Wong
Gerald O Wood
Charles & Karen Woods
Wright & Yonan
Nancy & David Yob
Joyce C Young
Karen Young
Sam & Grace Young
James W Zeeb
Louis & Rosemary Ziraldo
Elizabeth & Charlie Zukoski

FOUNDATION CIRCLES

A special component of our annual giving campaign, these circles recognize contributors of \$1000 or more between July 1, 2008 and June 30, 2009. The Foundation Circles are comprised of friends who share our belief that everyone should be treated with dignity and humanity and that people who are homeless, impoverished and working poor in our community have the means to rebuild their own lives. With your support, we help them build that foundation.

Anonymous (5)
ABC Finance Company
Vivian Ackerman
The Allyn Family
Foundation
Rene S Almazan
Arizona Public
Service-Saguaro Power
Marto & Jill Ballesteros
Bryant & Betty Bannister
Donna & James Bauer
Theodora C Bell
The Ben Harding
Foundation
Benedictine Convent of
Perpetual Adoration
John & Barbara Bentley
The Betty Jean
Chambers Trust
Peter A Bigot
Anne & Donald J Brooks
Michael P Burkholder
Sandra & Robert
Bushroe
Hector & Glory Campoy
Casas Adobes
Congregational Church
CBIZ Inc
Elizabeth Cherry &
Olivier Mosset
Leslie J Cohen
Charlotte & James Cordes
Cottonwood Properties
Cox Media
Richard M Cunningham
Thomas F Dasse
Diamond Family
Philanthropy
John P Diaz
Peter Dillard &
Mark Mussari
Linda Drake &
David Van Wyck
John & Anne Duffy
The Evo-Ora Foundation
Excel Mechanical
Mike & Kay Fagan
Boyd & Polly Finch
Andrew S Flach &
Gail S Block

DIGNITY LEVEL
\$1,000-\$2,499

Norman & Carolanne Flagg
Fresh Pond Trust
Helen Gaebler &
David E Adelman
Mary Clare & Andrew
Gildon
Lucy Del Giorgio
Paul & Dolores Gohdes
Thomas & Laura
Goodman
Eric & Elizabeth
Groskind
Ermaline T Hannum
Joseph R Heller
Margaret M Hitchcock
William & Silke
Hoffmann
James & Virginia Holen
Leslie & Beth Hunter
Peggy Hutchison &
Michael Elsner
Scot M Hutchison
Immanuel Group
The Jade Tree
Foundation
John K. & Aline L. Goodman
Foundation
The Kara Foundation
Roy L Kaufmann
Stanley & Karen Kissinger
Barbara & Arnold Kraus
Werner & Janine Kroebig
Brenna Lacey
Jack & Glenda Larabee
John & Meredith Little
Margaret McDonald
Hershel McGriff
Rebecca McReynolds &
Maureen Enos
Mesch, Clark & Rothschild
Mrs Genevieve Morrill
Catherine J Morton
Martin J Murphy
Neroni Family Fund
Daniel M Norton
Dr Katherine F Nutt
Oro Valley United

Every effort is made to accurately represent the giving history of our donors. Should you notice that we have inadvertently missed listing your donation please contact us at 623-5111 x101

Church of Christ
Gordon & Elizabeth
Packard
Tunis & Mari Parsons
Pascua Yaqui Tribe
Charles & Suzanne Peters
William & Kathleen
Peterson
Laura and Thomas W Pew
David Powell
Douglas & Robin Rainwater
Raytheon Charitable Giving
Seymour & Elinor Reichlin
Stacey S Richter
Alan Robertson
Jeffrey Roesler
Jean Russell and
Barbara Straub
Andy Silverman &
Starr Sanders
Sarah & David Smallhouse
Angie & Michael Smith
The Solar Store
Luda Soldwedel
St Mark's United Methodist
Church
State Employees Charitable
Campaign
B E & Sandra Stein
Arlene Steward
Supported Living Systems
Talerico Family
Clifford & Beth Thompson
Raymund & Nora Toscano
Tucson Police Department
Unity of Tucson Inc
Faith & Neil Vance
Vantage West Credit Union
Janet M Vasilius
Czarina Verdugo
Volunteer Center of
Southern Arizona
William G Walker
Wells Fargo Housing
Foundation
Debbie N Wong &
Rene Almazan
David A Yetman
Margaret J Zube

OPPORTUNITY LEVEL
\$2,500-\$4,999

Anonymous
Briggs & Pat Ackert
Julian Babad
Betsy Iventosch Babb
Nancy Bissell
Janice S Crebbs
Pauline Kaplan
Dee Dee McCabe
The McCortney Foundation
John & Sandy Mitchel
Northern Trust Bank
Rebecca & Steve Pincus
Day E Ravenscroft
Robert J Wick
The Carol L Simpson
Foundation
Susan S Small
St Andrew's Presbyterian
Church
St Philip's in the Hills
Voyager Community Chapel
The Walnut Foundation
H Stanley Windham

EMPOWERMENT LEVEL
\$5,000-\$9,999

Anonymous
Shirley Allen
Carondelet Health Network
Fred & Christine Armstrong
The John Guilbert Foundation
Hazel and Jack Sullivan FamilyFund
Kilbert Revocable Trust
Ella Maass
Walt & Billie McCandless
Hugh S McKenzie
National Bank of Arizona-Phoenix
Rolf & Sarah B Peters
TJX Foundation Inc
Tohono O'Odham Gaming
Enterprise
US Bank
John S & Jill M Weiss

AUTONOMY LEVEL
\$25,000 & ABOVE

Bank of America Charitable Foundation
Community Foundation for
Southern Arizona
Cox Communications
HSBC
John & Helen Murphey Foundation
The Stocker Foundation
Susan Tarrence and Stephen Golden
Jane W Thorne

INDEPENDENCE LEVEL
\$10,000-\$24,999

Mary F Bartol
CitiGroup Foundation
William & Lotte Copeland
Community Partnership of
Southern Arizona
Edmonston Family Trust
Pam Grissom
Thomas M Grogan and
Candace C Grogan
Gloria & Charles Harrington
JPMorganChaseFoundation
Bonnie Kay
Holly S Lachowicz
The Marshall Foundation
Milton & Tamar Maltz
Family Foundation
M&I Bank
The William & Mary Ross Foundation
Linda & Ken Robin
Side by Side Foundation
The John M Simpson Foundation
Tucson Electric Power Co
Volk Company
Women's Foundation of
Southern Arizona
Zuckerman Community
Outreach Foundation

BOARD OF DIRECTORS

S E R V I C E D U R I N G F I S C A L Y E A R 2 0 0 8 - 2 0 0 9

Leslie Hunter
President

City of Tucson Community Services
Retired

Leslie J. Cohen, J.D.
Vice President

Director
Sonoran UCEDD Family &
Community Medicine, U of A

Adrian Duarte
Secretary

Train Service Conductor
Union Pacific Railroad

Rebecca McReynolds
Treasurer

Financial Writer

Nancy Bissell

Co-Founder
Primavera Foundation

Janice Crebbs

Administrative Assistant

Rhonda Dean

Healthcare Consultant

Rick Eck, Ph.D.

CEO
Supported Living Systems, Inc.

Joel Gastelum

City Planner
City of South Tucson

Ana Lopez

Teacher
Mission Manor Headstart

Gordon Packard

Co-Founder
Primavera Foundation

Charlene Pesquiera-Burner

Asset Management Analyst
Tucson Electric Power

Kathy Salewski

Chaplain
Odyssey Health Care

John Schwarz, Ph.D.

Professor/Author
University of Arizona

Andy Silverman, J.D.

Professor, College of Law
University of Arizona

Donna Smith-Gaines

Medical Coder
Veterans Administration

Susan Tarrence

Principal
The Sales Development
Company

Debbie Wong

VP and Relationship Manager
Small Business Banking
JPMorganChase
Retired

Senior Staff
FY 2008-2009

Peggy Hutchison

Executive Director

Marcy Brell

Chief Financial Officer

Deborah Dale

Chief Development Officer

Linda Kot

Deputy Director

Denise Taub

Properties Director

Board Meetings are held at 702 South
6th Avenue the second Wednesday
of every other month.

Members are re-elected every three
years, officers bi-annually.



702 South 6th Avenue Tucson, AZ 85701
Phone 520-623-5111 Fax 520-623-6434
www.primavera.org

Primavera Foundation Inc., is a non-profit social service agency that makes its services available to people regardless of race, color, religion, handicap, national origin, political beliefs, veteran status, sex, sexual orientation or age. Reasonable accommodation and special assistance are available in compliance with the Americans with Disabilities Act.